



**The PET for value to add.**  
skai® PureLux

# Introduction

## How skai® PureLux creates added value.

skai® PureLux is the next generation of sustainable matt surfaces. Developed and manufactured in Germany, the new product meets the strictest standards for furniture surfaces. With skai® PureLux, we, the surface specialists at Continental, are now setting new standards for PET: attractive appearance, excellent functional characteristics, reliable processing, and good high economic efficiency provide lasting success for our customers. In addition, recycled material can be used for skai® PureLux, which saves natural resources.

With its elegant, velvet matt surface and soft-touch effect, skai® PureLux significantly enhances any furniture, whether in the bathroom, the kitchen, or the living area. And if life sometimes gets crazy - no problem: skai® PureLux stands out with extraordinary characteristics like anti-fingerprint effect, extreme scratch resistance, and ease of cleaning.

The developers of skai® PureLux utilized their extensive experience, their excellent design and technology know-how, and their feel for market trends to create a product with true added value. A new product was created in close cooperation with proven industry partners that sets new standards and meets all of the premium demands of Continental.



## Market observation

Advantage due to market knowledge and networking.

Those who want to achieve long-term success have to think one step ahead. This requires a profound knowledge of the mechanisms and specific requirements of the market. We are intimately familiar with this market and well connected. This is why skai® PureLux furniture surfaces are successful worldwide.

Our successful and award-winning design work profits from our excellent networking. Thanks to comprehensive, broad trend research, we know today what is coming tomorrow and can thus set trends together with our partners, secure in the knowledge that they will lead to success. Our customers profit from this information advantage. It provides them with ideas and security for their product development. We also use these professional processes and systems successfully for skai® PureLux.

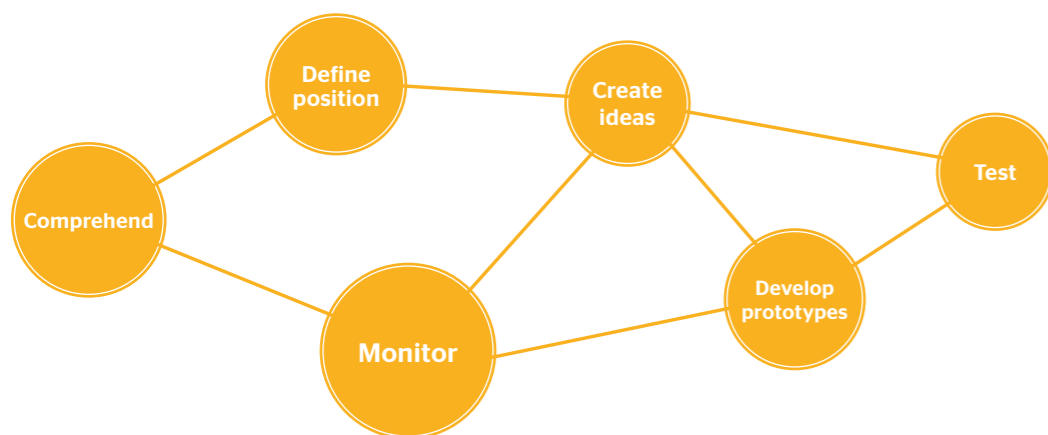


## Design competence

Surface design from Weissbach sets global trends.

Good design must be sustainable. We have been following this goal for years. That's why our design competence is no coincidence, but rather the result of a process that we are constantly improving. This makes us, with our matching decors and colors, a valuable partner for furniture surfaces. In close cooperation with our partners and customers, we develop trend-setting surfaces whose design is constantly impressive. This is how we set and pursue the trends for the furniture of the future - worldwide.

Our design leadership is confirmed consistently by best-selling decors, top placements with leading furniture manufacturers and regular wins of renowned awards. Our customers profit from our many years of design competence. With skai® PureLux, the creative minds in the Design Center have once again proven that they have the right feel for trendy colors.



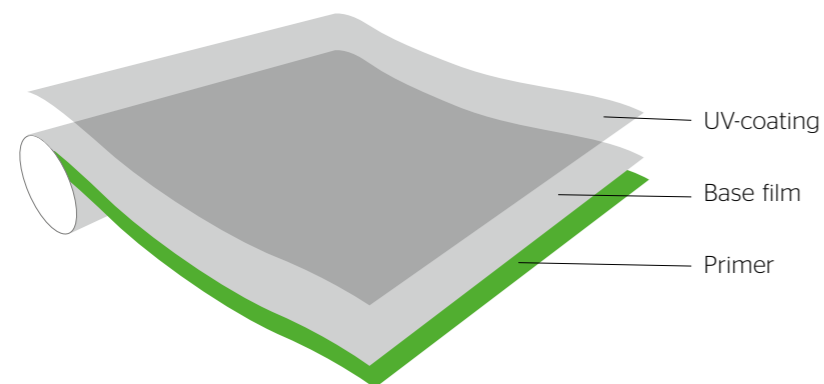
## R&D competence

Materials and surfaces, reinvented again and again.

Research and development form the basis for premium products. That is why we afford them the highest priority. This is reflected in our personnel, in our technical equipment, and in our facilities. Our know-how with regard to raw materials and formulas makes it possible for us to completely reinvent materials. With our excellent knowledge of standards, technologies, processing, and testing methods, we can provide our customers with optimal technical support. They also profit from active use and the close contact to network partners in the industry.

We generate inspiration in the industry and are proactive with a view toward future changes in the law, increasing requirements, and modern technologies. The result is a high degree of safety for mankind and the environment as well as products manufactured with state-of-the-art technology. An expertise that makes skai® PureLux a future-proof surface.

Material structure of a plain-colored film



## Material competence

Know-how turns good into better. And all of this on a highly individual level.

Better is the enemy of good. This has always been the case, and for us it is a maxim. Because customers, as well as the market itself, expect better from a premium manufacturer. Rightly so. Our extensive know-how makes it possible for us to develop targeted solutions. And, of course, we are not satisfied until we are certain that we can manufacture excellent products of the highest quality.

This is a high goal and nonnegotiable. Because the material quality is a decisive success factor for our customers as well. With skai® PureLux, we can now offer and individually develop PET furniture surfaces that meet the strictest requirements with regard to design and function.



## Sustainability

Environmentally friendly alternatives from a proven partner. For tomorrow.

Today's market demands products that convey a good feeling. They must not only be attractive with regard to look, feel, and function, but also with regard to sustainability. We have understood: As a capable partner of industry, sustainability is an important part of our strategy and has the highest priority.

This starts with our production, which meets the valid standards and high environmental requirements in Germany and operates under fair social conditions. From raw materials to the finished product, we focus on saving resources and utilizing environmentally friendly processes. With skai® PureLux, we are consistently staying on the path of sustainability and are working closely together with experts for PET recycling. In the future, we will close the loop and utilize PET recycle (rPET). In addition, we are pursuing alternative disposal concepts, and our environmental management system is certified in accordance with DIN EN ISO 14001.

All of our products are subject to the European REACH Regulation and meet its requirements. If the products incur information obligations pursuant to Article 33, this information is naturally forwarded to our customers.



## Industrialization

Perfection is the measure.  
And the goal.

With our many years of extensive know-how, we like to play it safe. Here, our process technology team ensures that the process chain is running smoothly. The application technology department conducts trial runs in our own technology center, ensures conformity with current standards, and obtains certifications. Technical data sheets are created, as well as recommendations for technical processing and cleaning recommendations for end customers.

Our combination of competence, experience, and technical know-how allows us to manufacture standard-compliant, market-conforming, processing-safe, and long-lasting products using the latest manufacturing technology. This makes skai® PureLux a top product that meets the highest standards in every regard - available from stock.





## Series production

With care and safety.

Quality – Made in Germany.

We accept no compromises with regard to quality and leave nothing to chance. With development and production “Made in Germany”, we ensure that the entire supply chain and all products meet the highest standards and requirements and are regularly certified. But even that is not enough: Our surfaces must also pass our internal testing methods, which exceed the requirements of the norms. In this way, we carefully ensure that they meet even stricter standards.

Manufacturing in Germany means short pathways for materials and products for the national and European market. This secures and optimizes the supply chain of the customers and reduces the ecological footprint.



DIN EN ISO 9001  
DIN EN ISO 14001  
DIN EN ISO 50001

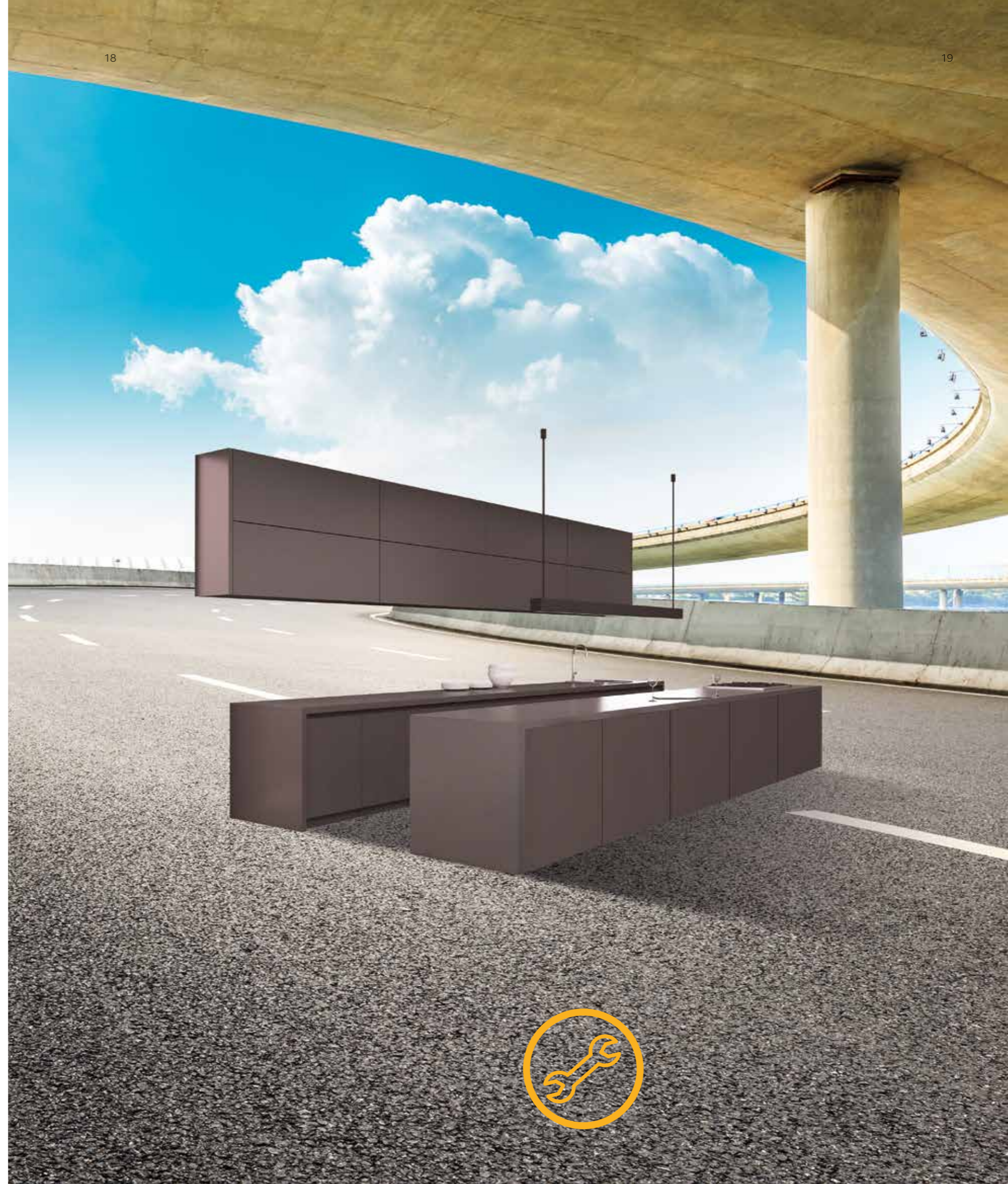


## Customer service

An attractive overall package of products and service. Perfectly bundled for you.

All customers are different, just like their applications. Special needs and requirements are the norm. For that reason, deciding to use our products is just the beginning of the pathway toward creating the perfect furniture surface. Often, our competent customer service makes the difference. Our experienced team is ready to render assistance at any time in the areas of application technology, development, product management, marketing, and design – at our plant in Weißbach or in production on site at the customer's facility.

Come what may: With skai® PureLux, we will also provide professional assistance to our customers with regard to technical questions and requirements. A high quality product and competent service that precisely meets the needs of the customer create an attractive, individual, overall package.

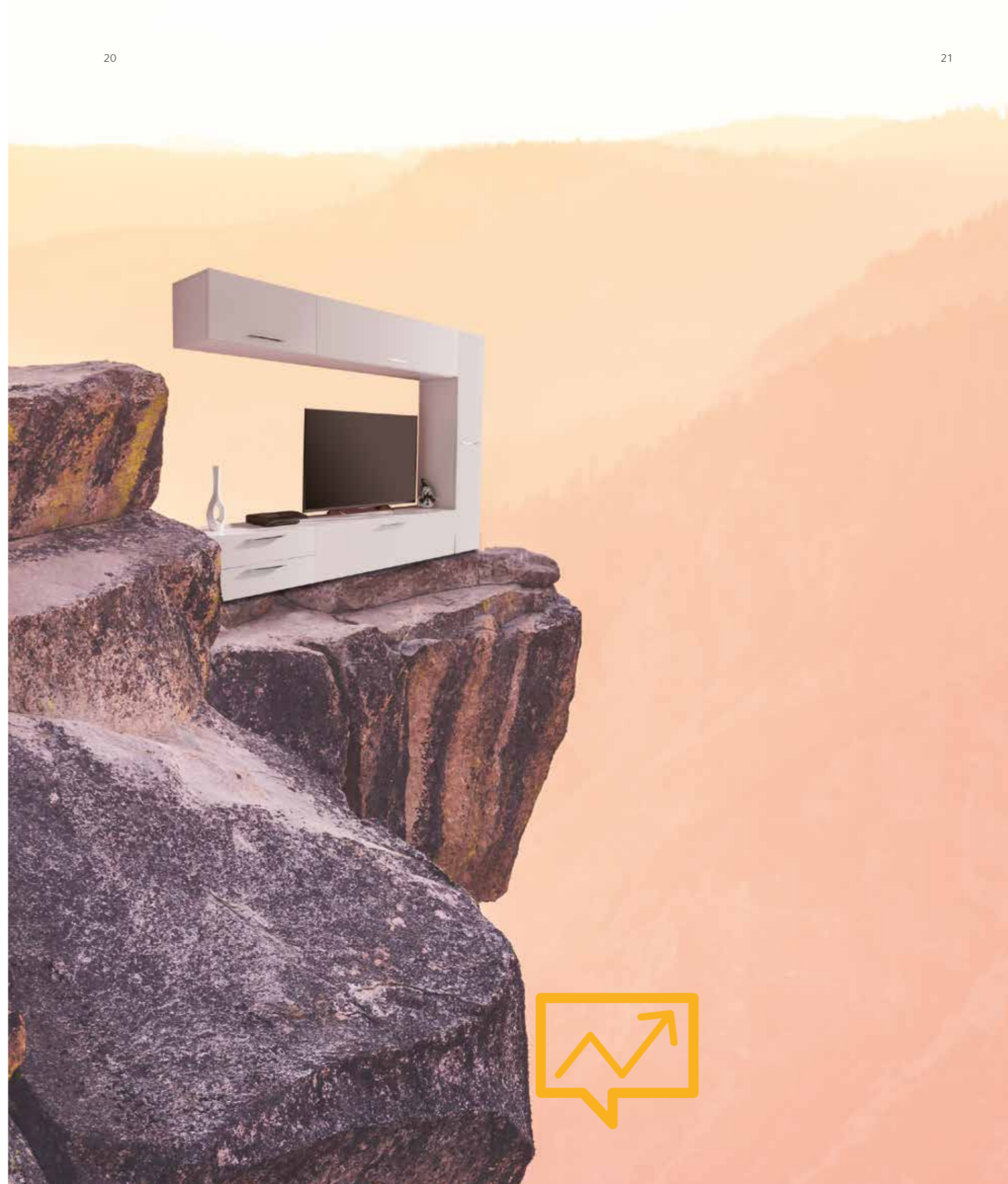


## Marketing

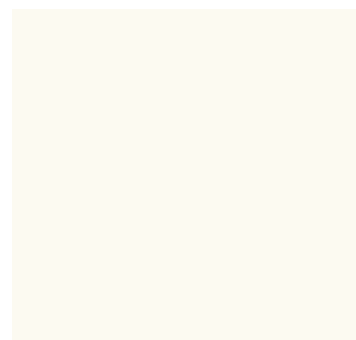
Effective communication impresses customers.  
Your customers.

The key to the success of skai® PureLux is the consistent communication of its material and product advantages as a state-of-the-art furniture surface. It is not only an ideal match for high quality bathroom, kitchen, and modular furniture, but it also makes them even better.

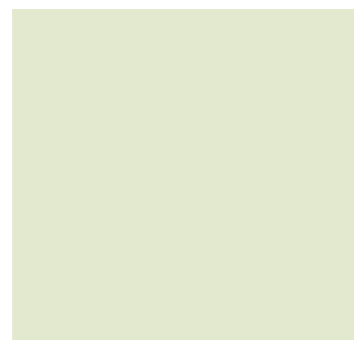
This is matched by the fact that we perform professional marketing with full conviction; with a well-networked sales force, we inspire our customers. We convey the necessary knowledge about the product and application by means of customer events, product information, newsletters, technology training - here, we make it possible to experience skai® PureLux digitally and live. For this, we bundle our efforts with our partners with regard to matching colors and decors and utilize the strong presence of associations and institutions in the market.



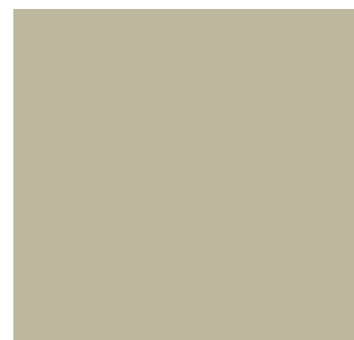
## Available colors



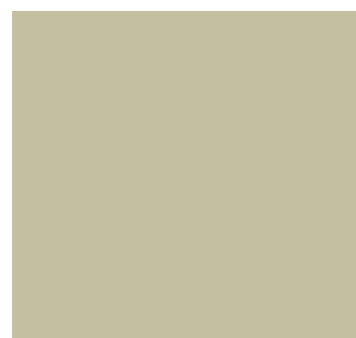
cool white



pistacio



urban grey



cappuccino



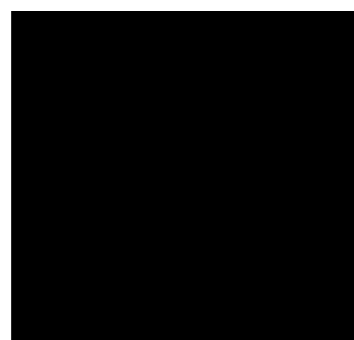
manhattan



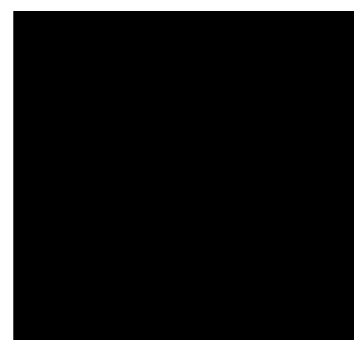
marsala



parisian blue



charcoal



deep black

Customer-specific colors are possible.

## Specification\*

Characteristic	Insp. Method	Value
Thickness	DIN EN ISO 2286-3 (10mm / 40,8-43,3 kPa)	0,25 ± 0,02 mm
Gloss level	DIN EN ISO 2813 60° measuring head	1,5 - 3,5 GU (depends on color)
Dimensional stability	DIN 53377 120°C, 10 min	longit. max. -5 % across max. -4 %
Surface tension Backside	Acrotest blue test ink ISO 8296	≥ 40 mN/m
Light fastness	DIN EN ISO 105 B02	Step ≥ 6
Chemical resistance	DIN 68861-1 DIN EN 12720	1 B
Abrasion resistance taber	DIN 68861-2 DIN EN 15185	2A (> 400 U)
Scratch resistance	DIN 68861-4 DIN EN 15186	4D (1,2 - 1,4 N) (depends on color)
Cross cut	DIN EN ISO 2409	0
Antifingerprint	CE AA 10-85 internal test method	i. O.
Resistance to dry heat	DIN 68861-7 DIN EN 12722	7C (100°C)
Resistance to wet heat	DIN 68861-8 DIN EN 12721	8B (70°C)
Tensile strength	ISO 527-3 Typ 2	longit. ≥ 40 N/mm <sup>2</sup> across ≥ 30 N/mm <sup>2</sup>
Opacity	over black / white	dE ≤ 0,35
Color tolerances	ISO 11664-4 light D65 10° measurement geometry d/8	dE ≤ 0,5 dL ≤ 0,3 da ≤ 0,2 db ≤ 0,3

Version 01/1-2021

## Treatment / storage regulation

- > Store the foil in a dry place not out of doors, avoid direct sunlight and frost.
- > The ideal storage temperature is between 5°C and 30°C.
- > Foil has to be stored at a room temperature 20°C +/-3°C for at least 48 hours before processing.
- > Maximum storage period of foils is 12 months in general. Maximum storage period of foils equipped with protecting film is 6 months.

\* The detailed material-specific product data sheet on request

## Interior Living

### Contact

Konrad Hornschuch AG  
Salinenstrasse 1  
74679 Weissbach  
Germany  
Tel. +49 (0)7947 81-8718  
skai@continental.com  
www.skai.com



K392-0887 EN 02.21



**Continental**   
The Future in Motion

The content of this print is non-binding and serves exclusively  
Information purposes. The industrial property rights shown are the  
property of Continental AG and / or its subsidiaries.  
Copyright © 2021 Continental AG, Hanover. All rights reserved.  
For further information, please visit [www.continental-industry.com/disclosure](http://www.continental-industry.com/disclosure)